



GARIT
DEEMED TO BE
UNIVERSITY
(Under Section 3 of the UGC Act, 1956)

Learn . Innovate . Lead

Empowering Minds, Shaping the Future

*Achieving excellence through NEP-aligned academics,
cutting-edge research, and an outstanding placement record.*

B.Tech, B.Sc, B.Com, M.Tech, M.Sc, Ph.D

ADMISSION
2026-27 **OPEN**



Recognized by the
University Grants Commission (UGC)
(Under Section 3 of the UGC Act, 1956)



GMRIT University - Backed by a legacy spanning over four decades



GMRIT Deemed to be University is an initiative of the globally respected GMR Group, one of India's leading infrastructure enterprises with a strong presence across airports, energy, transportation, and urban development. Backed by the Group's legacy of nation-building and innovation, the University is committed to delivering industry-aligned, future-focused education that integrates academic excellence with real-world exposure. With a strong emphasis on technology, research, and skill development, the University aims to nurture competent professionals and responsible leaders equipped to drive progress in a rapidly evolving global landscape.

The University focuses on employability, innovation, and hands-on learning. The University is designed to support high-impact education through modern infrastructure, industry mentorship, and strong corporate linkages — preparing students to become skilled professionals in globally competitive sectors.

(Sponsored by GMRIT Foundation, Section 8 Company)



75% of faculty with Ph.D.



Outcome-Based Education with Choice Based Credit System



NEP 2020-aligned academic flexibility



MOOCs integration (NPTEL, L&T LEARNCONNECT & AWS)



International Immersion Programmes, Internships, Research and Innovation

Accreditations & Rankings:



4
Schools

11
UG programs

8
PG programs

8
Ph.D in distinct disciplines



The Nexus of Learning: Programs & Disciplines

The GMRIT University offers a portfolio of NEP-2020 aligned programs across four dynamic schools: Advanced Computing, Applied Engineering, Commerce, and Physical Sciences. The curriculum, supported by the Choice Based Credit System (CBCS) and MOOCs, is designed to provide expert-led, outcome-based education. The University offers a wide array of future-ready disciplines in UG, PG, and Doctoral programs, including specialization in AI, Data Science, Cyber Security, and various core engineering streams. The University focuses on hands-on, project-based learning and research to ensure the graduates with strong fundamentals and makes them career-ready.



School of Advanced Computing

B.Tech. Programs

Fees: INR 1,25,000 / Sem,

- Computer Science and Engineering
- Information Technology
- Computer Science and Engineering (Artificial Intelligence and Machine Learning)
- Computer Science and Engineering (Artificial Intelligence and Data Science)
- Computer Science and Engineering (Cybersecurity)

M.Tech. Programs

Fees: INR 30,000 / Sem.

- Computer Science and Engineering

Ph.D.

Fees: INR 25,000 / Sem.

- Computer Science and Engineering

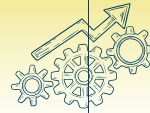


School of Commerce

B.Com.

Fees: INR 25,000 / Sem.

- Computer Applications



School of Applied Engineering

B.Tech. Programs

Fees: INR 75,000 / Sem.

- Civil Engineering
- Electrical and Electronics Engineering
- Electronics and Communication Engineering
Fees: INR 1,25,000 / Sem.
- Mechanical Engineering

M.Tech. Programs

Fees: INR 30,000 / Sem.

- Transportation Engineering
- Power & Industrial Drives
- VLSI & Embedded Systems
- Thermal Engineering

Ph.D.

Fees: INR 25,000 / Sem.

- Civil Engineering
- Electronics & Communication Engineering
- Electrical & Electronics Engineering
- Mechanical Engineering



School of Physical Sciences

B.Sc.

Fees: INR 25,000 / Sem.

- Data Science

M.Sc.

Fees: INR 25,000 / Sem.

- Applied Mathematics
- Physics
- Chemistry

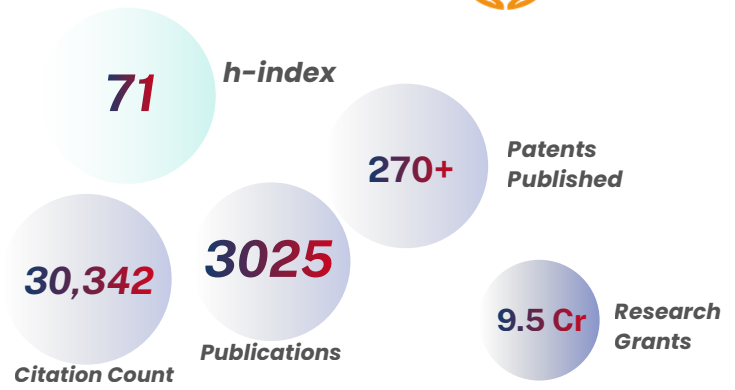
Ph.D.

Fees: INR 25,000 / Sem.

- Mathematics
- Physics
- Chemistry (Organic Chemistry)

Research Credentials

The University hosts advanced research centers and laboratories that support high-quality research and innovation. It fosters a strong faculty-student research culture, offering hands-on experience and expert mentoring. Additionally, its industry-linked, interdisciplinary research addresses real-world challenges, promoting innovation and skill development.



- Advanced Manufacturing Technology and Testing
- Material Testing and Consultancy (L&T sponsored Lab)
- Nanoscience & Nanotechnology
- Quantum Technologies
- Renewable energy & EV applications
- VLSI and Embedded Systems
- Advanced Computation & Engineering Simulations
- Cyber Security
- Tinkering Lab for promoting Innovation
- IOT & Drone Lab
- Communication and Networking Lab (Sponsored by BSNL)
- Top 2% of scientists globally recognized by Elsevier and Stanford University.

Professional Body Chapters

Gain invaluable industry exposure and networking opportunities by engaging with our active chapters of top global professional bodies. Students regularly participate in technical activities, workshops, and events through esteemed organizations such as:



Excellent Placements

The University's Placement and Career Development Cell helps students secure internships and jobs with premier companies. It offers industry exposure, hands-on experience, mentorship, and networking, preparing students for industry demands. With strong alumni support and industry partnerships, the University achieves excellent placement outcomes and promotes long-term career growth through structured internships and real-time projects.



43 LPA
Highest Placement Package

90%
Of Offers

100+
Companies Visited
Campus for placements

Vibrant Student Life

Vibrant Community:

Join a vibrant campus community with various clubs, student societies, and events, including cultural festivals and hackathons, that promote creativity, leadership, and lasting friendships.

Nation Building:

Participate in social engagement activities with NCC, NSS, and Unnat Bharat Abhiyan.

Sports, Fitness & Well-being:

The University boasts state-of-the-art sports infrastructure with stadiums and courts for cricket, football, basketball, and more. Students can also utilize the Gym & Fitness Centre and participate in Yoga. Also the centers dedicated for values and well-being encourage a balanced lifestyle.

Student Clubs:

Join groups across Technology & Innovation (Robotics, AI, Coding), Academic, Social & Special Interest (Quiz, Literary, Green Eco), and Arts & Recreation (Photography, Dance, Music).

Hostel Life:

Enjoy a secure and friendly residential campus with a supportive living environment that includes hygienic and nutritious food.



Scholarships

Programs	Scholarships %	Based on Class XII Marks in %		JEE Mains 2026 (Percentile)	CET (for all states)	Achievements in Sports
		Board of Intermediate Education BIE% & Other State Board	CBSE(GPA), ICSE, IB, Cambridge & Other National Boards			
For All UG Programmes	100%	NA	NA	> 97	01 to 2500	International
	75%	97% & Above	92% & Above	> 95-97	2501 to 5000	National
	50%	95% & Above	90% & Above	> 90-95	5001 to 10000	NA
	25%	85% & Above	80% & Above	> 85-90	10001 to 20000	State level
	15%	80% & Above	75% & Above	NA	20001 to 40000	NA
	10%	75% & Above	70% & Above	NA	40001 to 60000	NA

For more information, Google






Scholarships up to **100%***

*Merit-based scholarships, awarded based on academic performance in Class XII or qualifying exams. Kindly refer website.

**Research-Powered Learning.
Career-Ready Graduates.**

ADMISSION
2026-27 **OPEN**

Holistic Admission process :

 Register Yourself Register at www.gmrit.edu.in	 Fill Online Application Through Online Portal	 Upload Required Documents Digital Copies of your Documents	 Pay Application Fee Rs. 500 + GST
 Student Interaction/ GMRCET Interaction with Faculty Members (online / offline)	 Admission Offer After Holistic Assessment	 Registration Fee Payment Through Online Portal	 Student Gets Enrolled Attend Classes



Learn . Innovate . Lead

 **9182129600, 9110503349, 9182801752**

 **gmritdu@gmrit.edu.in**

 **GMRIT Deemed to be University, GMR Nagar,
Rajam, Andhra Pradesh, India – 532127**

 **www.gmrit.edu.in/du/ (New)**

www.gmrit.edu.in (Old)



Admissions 2026-27
SCAN TO APPLY NOW



Visit Website
SCAN TO EXPLORE

